

»» **Outdoor rental LED screen**



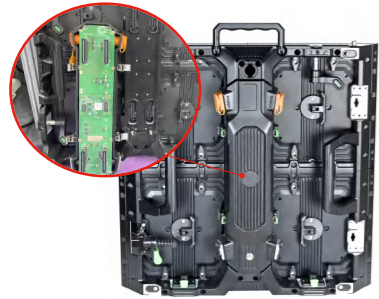
Module information



Module Size:250*250mm

Model	P2.604	P2.976	P3.91	P4.81
Size	250*250mm			
Pitch	2.604mm	2.976mm	3.91mm	4.81mm
lamp bead	1415	1415	1921	1921

Product superiority



45°Cut Angle Cabinet
The screen can be stitched together into 90° angles



Front maintenance / Post maintenance
Support for front maintenance and post maintenance, maintenance is more convenient.

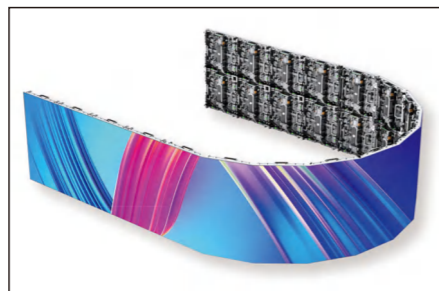


Curve lock connection
According to different scenes, the screen splicing into the desired shape.

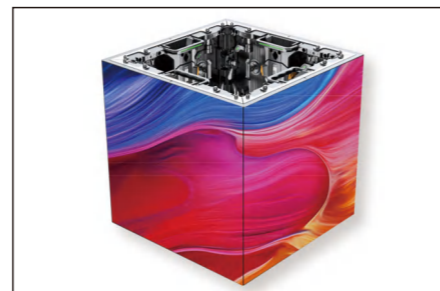
way to install



Normal splice



Curve splice



Right Angle splicing

Application



Parameter

Model	P2.604	P2.976	P3.91	P4.81
Pitch	2.604mm	2.976mm	3.91mm	4.81mm
Density	147456 dots/m ²	112896 dots/m ²	65536 dots/m ²	43264 dots/m ²
LED Type	SMD1415		SMD1921	
Module Size	250*250mm(W*H)			
Module Resolution	96*96(W*H)	84*84(W*H)	64*64(W*H)	52*52(W*H)
Cabinet Size	500*500*75mm / 500*1000*75mm(W*H*D)			
Cabinet Resolution	192*192 192*384(W*H)	168*168 168*336(W*H)	128*128 128*256(W*H)	104*104 104*208(W*H)
Module	2*2=4pcs / 2*4=8pcs			
Power	300W/m ² - 800W/m ²			
Brightness	≥4000CD/m ²			
Best Viewing Distance	≥3m		≥4m	≥5m
Driving mode	1/32Scan	1/28Scan	1/16Scan	1/13Scan
Viewing Angle	H:160° V:160°			
Refresh Rate	3840Hz / 7680Hz			
Pixel Configuration	1R1G1B			
Protection Degree	IP65			
Operating Voltage	110V / 220V			
Working Temperature	-20°C - 50°C			
Lifetime	100000H			
Installation mode	Hoisting / Fixed installation / Arc installation			
Customized Solutions	Non-standard specifications can be customized			

PRODUCT

INTRODUCTION

A-B CHIP

»» Outdoor Fixed LED screen



640 * 640mm
Waterproof iron cabinet



960 * 960mm
Waterproof iron cabinet



960 * 960mm
Die-Cast Aluminum

Module information



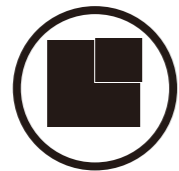
Module Size:320*160mm

Model	Hot		Hot					
Model	P2.5	P4	P5	P5	P6.67	P8	P10	P10
Size	320*160mm							
Pitch	2.5mm	4mm	5mm	5mm	6.67mm	8mm	10mm	10mm
lamp bead	1415	1921	1921	2727	3535	3528	3528	3535

Product superiority



Ip65 waterproof



Seamless splicing



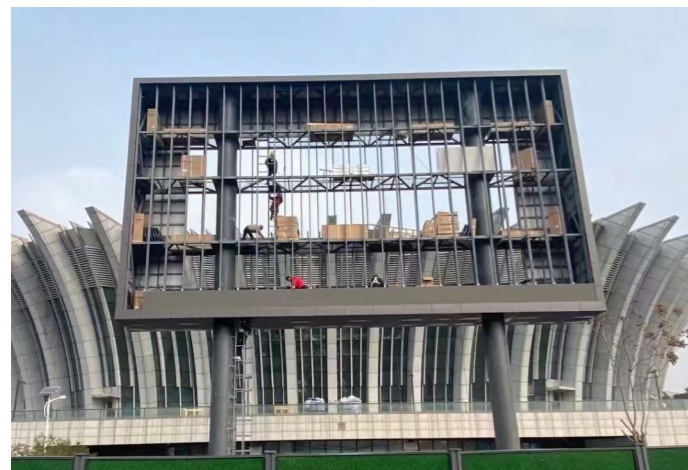
High brightness



HD picture quality



Good protective performance



PRODUCT

INTRODUCTION

A-B CHIP

Application



Parameter

Model	P2.5	P4	P5	P6.67	P8	P10
Pitch	2.5mm	4mm	5mm	6.67mm	8mm	10mm
Density	160000 dots/m ²	62500 dots/m ²	40000 dots/m ²	22500 dots/m ²	15625 dots/m ²	10000 dots/m ²
LED Type	SMD415	SMD1921		SMD3535	SMD3535	
Module Size	320*160mm(W*H)					
Module Resolution	128*64(W*H)	80*40(W*H)	64*32(W*H)	48*24(W*H)	40*20(W*H)	32*16(W*H)
Cabinet Size	640*640*80mm / 960*960*80mm(W*H*D)					
Cabinet Resolution	256*192 384*384(W*H)	160*120 240*240(W*H)	128*96 192*192(W*H)	96*72 144*144(W*H)	80*60 120*120(W*H)	64*48 96*96(W*H)
Module	2*4=8pcs / 3*3=9pcs					
Power	300W/m ² - 800W/m ²					
Brightness	≥4000CD/m ²					
Best Viewing Distance	≥3m	≥4m	≥5m	≥7m	≥8m	≥10m
Driving mode	1/32Scan	1/20Scan	1/16Scan	1/6Scan	1/5Scan	1/4Scan 1/2Scan
Viewing Angle	H:160° V:160°					
Refresh Rate	3840Hz / 7680Hz					
Pixel Configuration	1R1G1B					
Protection Degree	IP65					
Operating Voltage	110V / 220V					
Working Temperature	-20°C - 50°C					
Lifetime	100000H					
Installation mode	Hoisting / Fixed installation / Arc installation					
Customized Solutions	Non-standard specifications can be customized					